



Product data

Specification item	Value	Unit
Product name	STM 9W 250mA HPFU	
Order code	127719	
EAN (GTIN)	8010703883062	
Pieces per box	90	
Product weight	65	Gr
Made in	Italy	

Electrical input data

Specification item	Value	Unit	Condition
Rated input voltage	100...127 / 220...240	Vac	
Input voltage AC range	90...264	Vac	
Input voltage DC range	176...275	Vdc	Factory default 100% EOFi= 1
Rated input frequency	50...60	Hz	
Rated input current	0,1	A	Referred to Vin = 230 V, 100% load
Rated input power	11	W	Referred to Vin = 230V, 100% load
Power factor	0,88 C	λ	
THD	> 40	%	Referred to Vin = 230 V, 100% load
Efficiency	81	%	Referred to Vin = 230 V, 100% load
Stand-by Power	N/A	W	
Isolation input to output	SELV 60		

Electrical output data

Specification item	Value	Unit	Condition
Regulation method	Constant current		
Output voltage	2...36	Vdc	
Output voltage max.	39	V	Open load
Output current	250	mA	
Output current tolerance +/-	5	%	
Output power	0...9	W	
Output current ripple	< 3	%	
Output Pst LM	< 1		
Output SVM	< 0.4		

Operating window 220...240V

Pout W	Vout DC	Iout mA
9	2...36	500

Operating window 100...127V

Pout W	Vout DC	Iout mA
6	2...24	500

Electrical data controls input

Specification item	Value	Unit	Condition
Control method	ON - OFF		

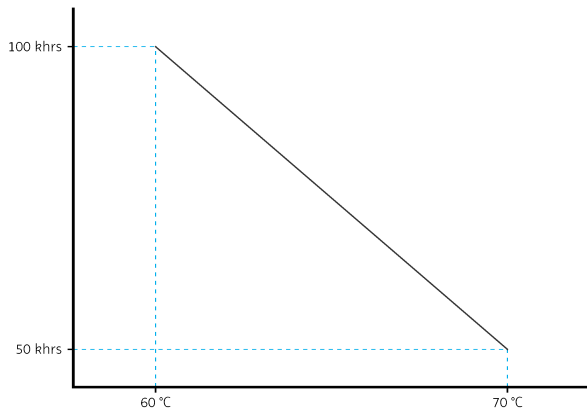
Insulation

Specification item	Output	Controls	Earth
Input	double or reinforced	N/A	N/A

Operation temperatures and humidity

Specification item	Value	Unit	Condition
Ambient temperature	-20... 55	°C	55°C referred to 220...240Vac
Tc	80	°C	Maximum temperature measured at Tc point
Maximum housing temperature	100	°C	In case of failure

Temperature/Life



Storage temperature and humidity

Specification item	Value	Unit	Condition
Ambient temperature	-30...85	°C	
Relative humidity	5...85	%	Non condensing

Features

Specification item	Value	Condition
Open load	Yes	
Short circuit	Yes	
Over load and thermal protection	Yes	C.5.a
Hot plug	No	
DC emergency level	100 %	Default 100% EOFi = 1
24V Auxiliary Power Supply (DALI part 150)	Yes	

In rush current

Specification item	Value	Unit	Condition
In rush current	20 / 170	A / usec	
Drivers / MCB 16A type B	50	pcs	

Driver touch current / protective conductor current

Specification item	Value	Unit	Condition
Typical Protective Conductor Current	0.18	mA	

Surge immunity

Specification item	Value	Unit	Condition
Mains surge immunity (diff. mode)	2	kV	
Mains surge immunity (comm. mode)	2	kV	

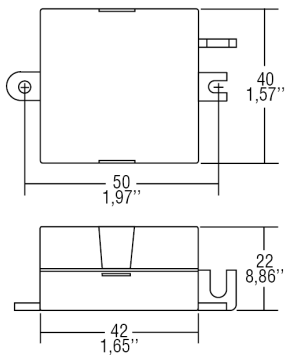
Application info

Specification item	Value
Approval marks	CE UKCA EAC ENEC UR RCM CCC
Application	Compact indoor fixed current
Mounting type	Built-in

Wiring and connections

Specification item	Value	Unit	Condition
Input wire cross section	0.5...1.5 / 20...15	mm ² / AWG	
Input wire strip length	8...8.5	mm	
Output wires cross section	0.5...1.5 / 20...15	mm ² / AWG	
Output wire strip length	8...8.5	mm	
Control wire cross section	0.5...1.5 / 20...15	mm ² / AWG	
Control wire strip length	8...8.5	mm	
Max. cable length		cm	Max. LED distance see page info 8

Dimensions



Performance curves

